

What Can You Do?

You can help minimize illicit discharges by disposing waste in the proper manner.

- Take used motor oil to a participating oil recycling center.
- Follow label directions regarding container disposal of cleaners.
- Compost yard waste or bag and dispose using solid waste collection programs.
- Report any illicit discharge to the City.



Swimming Pool and Spa

- Swimming pools only need drained only when attest kite does not detect chlorine levels.



- A pool, whenever possible, should be drained into a sanitary sewer system.
- Pool and spa chemicals should be stored properly to prevent leaks and spills, preferably in a covered area to avoid exposure to stormwater.



Important Take Home Points

Remember...

- What we do on land affects the quality of the water we drink and use.
- Small sources of pollution add up to cause big water quality problems
- Natural things such as soil, leaves, grass clippings, and pet waste can cause water pollution.
- Waste dumped into storm sewers goes into the river without treatment.
- Automobiles and other vehicles cause water pollution as well as air pollution.



EVERYONE

CAN MAKE A DIFFERENCE

Reporting of Illegal Dumping or Suspicious Discharges

Notify the City of Sebastian of any illegal dumping or discharge incidents at the time of discovery.

Call Citizen Request at

772-581-0111

The City of Sebastian adopted an Ordinance No 0-13-11 which states Notice of Violation to the responsible person may be fined for the administrative, inspection and remediation cost and may be required to implement Best Management Practice (BMP).

Revised: 6/20/16

Illicit Discharge



City of Sebastian
Engineering Department
1225 Main Street
Sebastian, Florida 32958

What is an Illicit Discharge?

An Illicit discharge or illegal discharge is any disposal, emptying or dumping of any substance other than rainfall into the storm water drainage system or into to the ground system. The accidental spill or leakage of a harmful substance is also an illicit discharge.

Examples of Illicit Discharge:

- Sanitary waste water
- Septic Tank effluent
- Car wash waste waters
- Motor oil/fuel disposal
- Radiator flushing disposal
- Laundry waste waters
- Pesticides and herbicides
- Auto and household toxics disposal
- Leaves, grass clippings and yard waste



Engineering Department

City staff will conduct investigations and will monitor sites when a complaint or concerns is received from the public of illicit discharge and violators will be required to clean-up or will be fined for the cost of clean up and any inspections.



Six Easy Ways That You Can Keep Illicit Discharges Out of Our Waterways

1. Used oil, antifreeze, and batteries can be recycled. Clean up any spills immediately, kitty litter or sawdust will absorb the spill. Be sure to sweep these up as well.



2. Wash your car on the grass so that the water, detergent, and dirt will be filtered by the soil. A better solution is to take your car to a commercial car wash, where the dirty water is sent to a wastewater treatment plant.



3. Empty bottles of household cleansers, pesticides, and weed killer should be disposed of according to label directions.



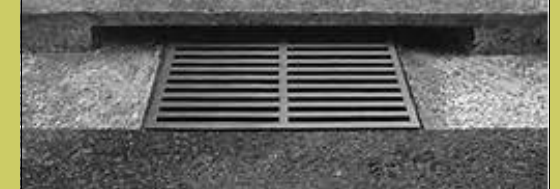
4. Grass clippings in the street should be swept up after each mowing, Grass clippings left in the street are being washed down into the storm sewers and end up in the streams where they have the potential to cause algae problems.



5. Many household products, including paints, paint thinners, and solvents can be taken to drop off sites. Paint brushes used with water based paint can be rinsed in the sink. If you have leftover paint in a can, and it is latex or water-based paint you can fill the can with kitty litter and once it is absorbed you can set it out for trash pick up.



THE DRAIN IS JUST FOR RAIN



6. When walking your pet use a bag or use a scooper to clean up your pet's waste. In order to keep animal waste from contaminating our community, anyone who walks a pet should properly dispose of waste by picking it up, wrapping it, and either placing it into the trash or flushing it unwrapped.

